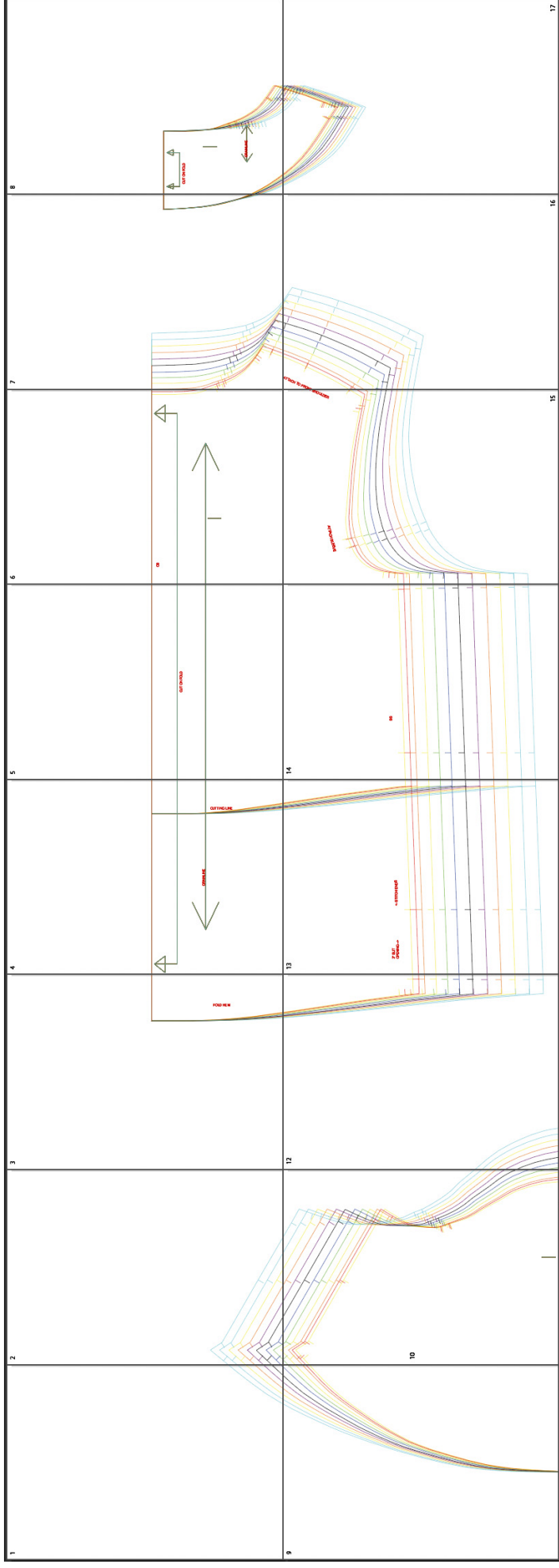
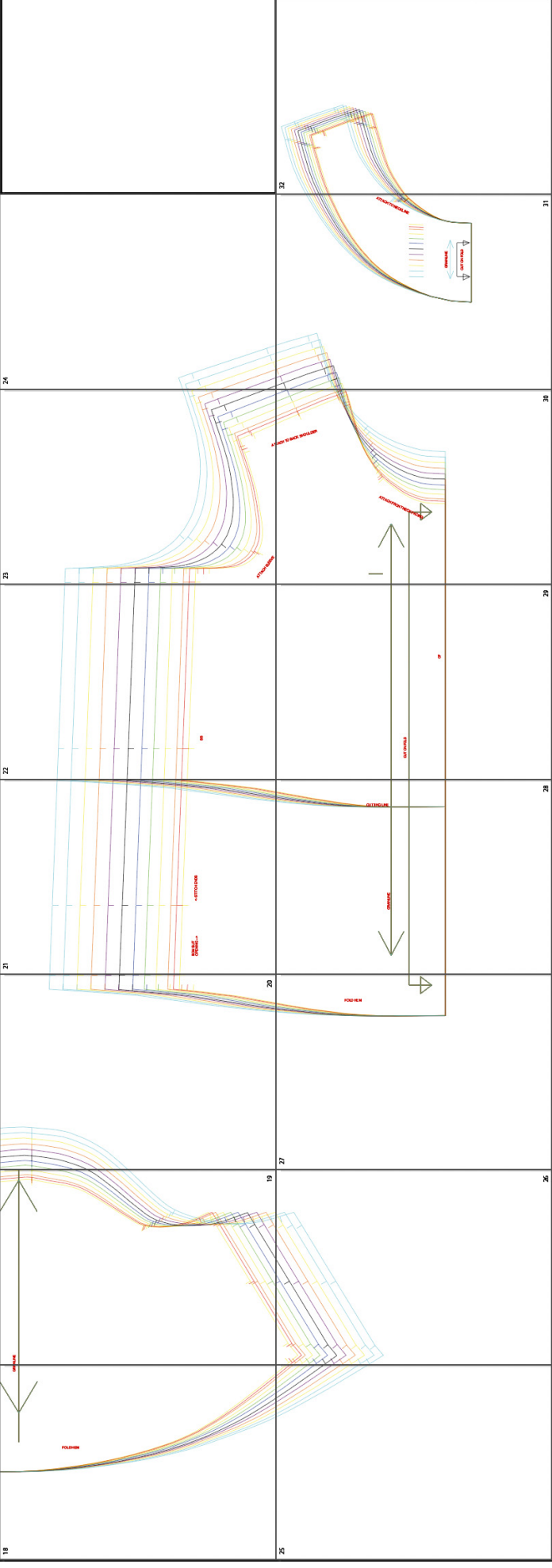


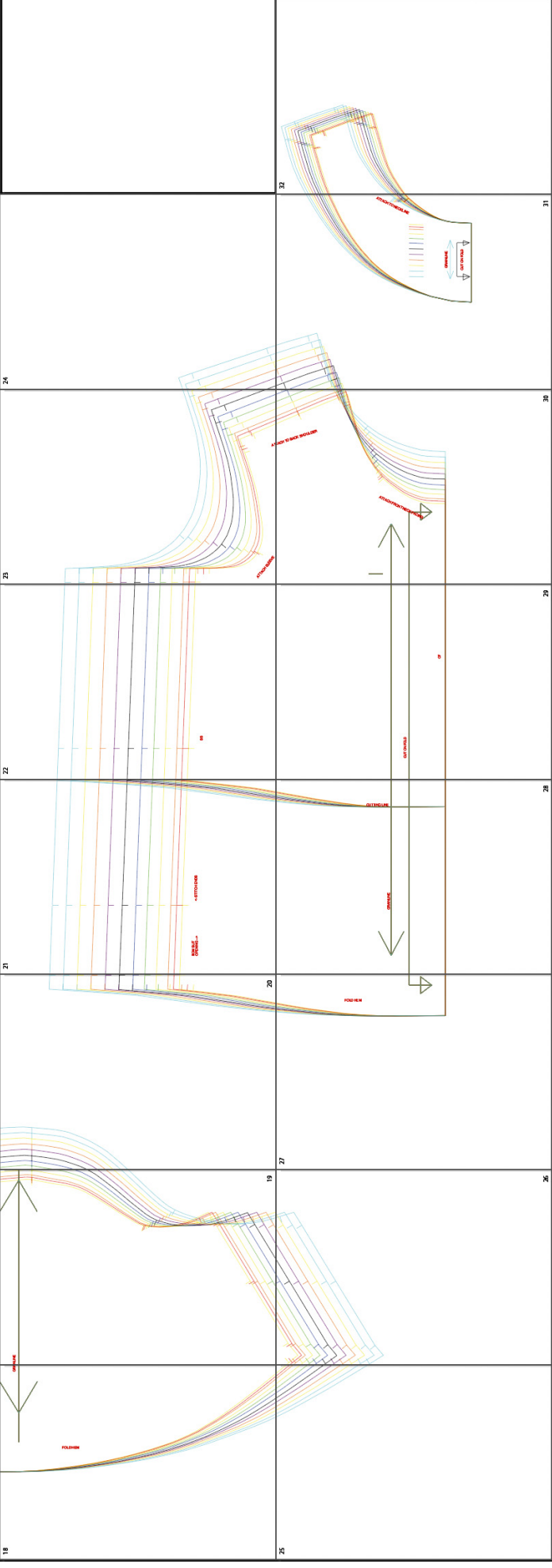
1-8 ->



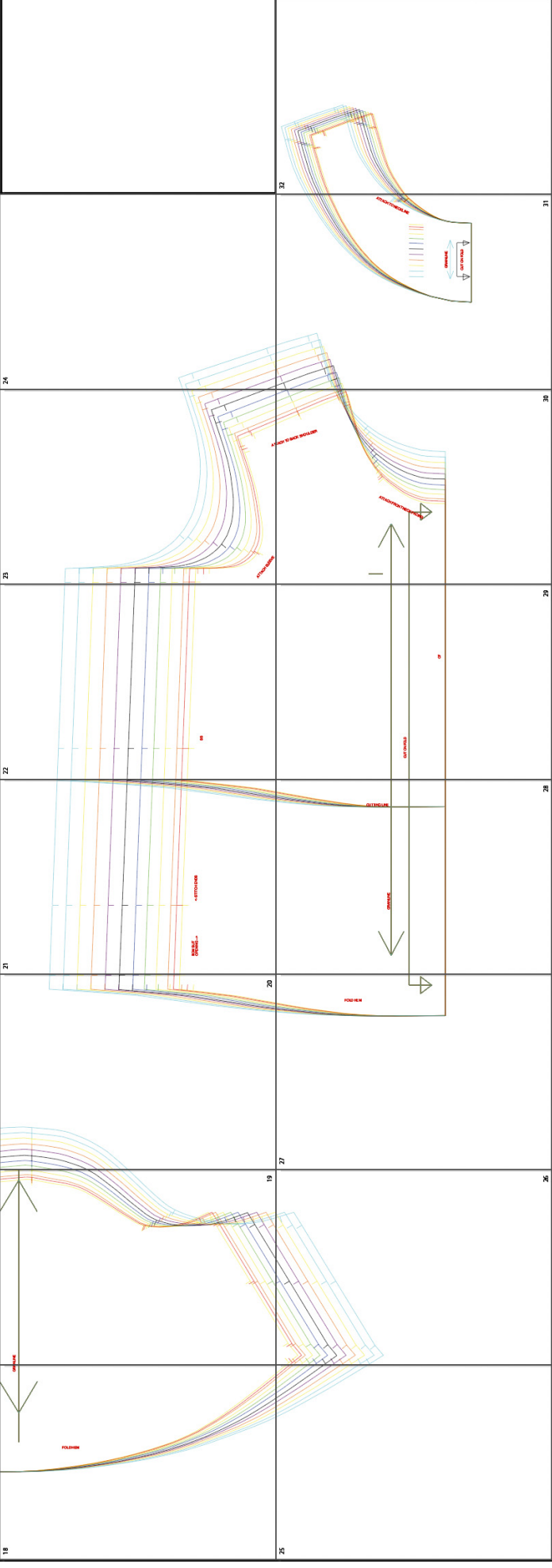
9-17 ->

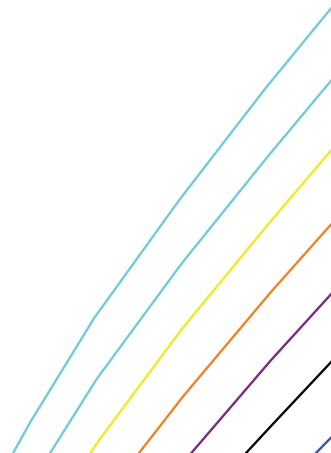


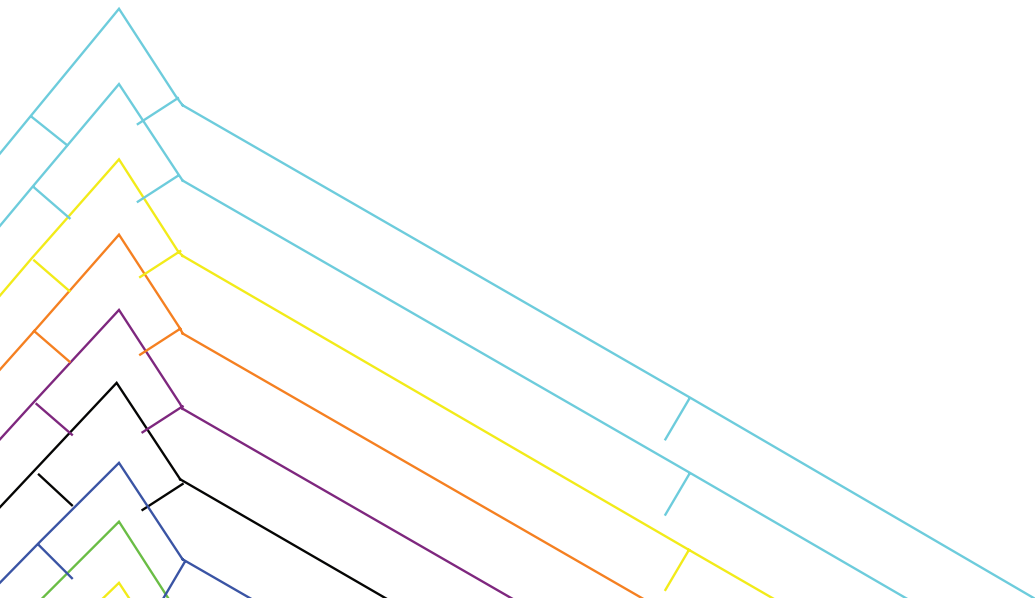
18-24 ->



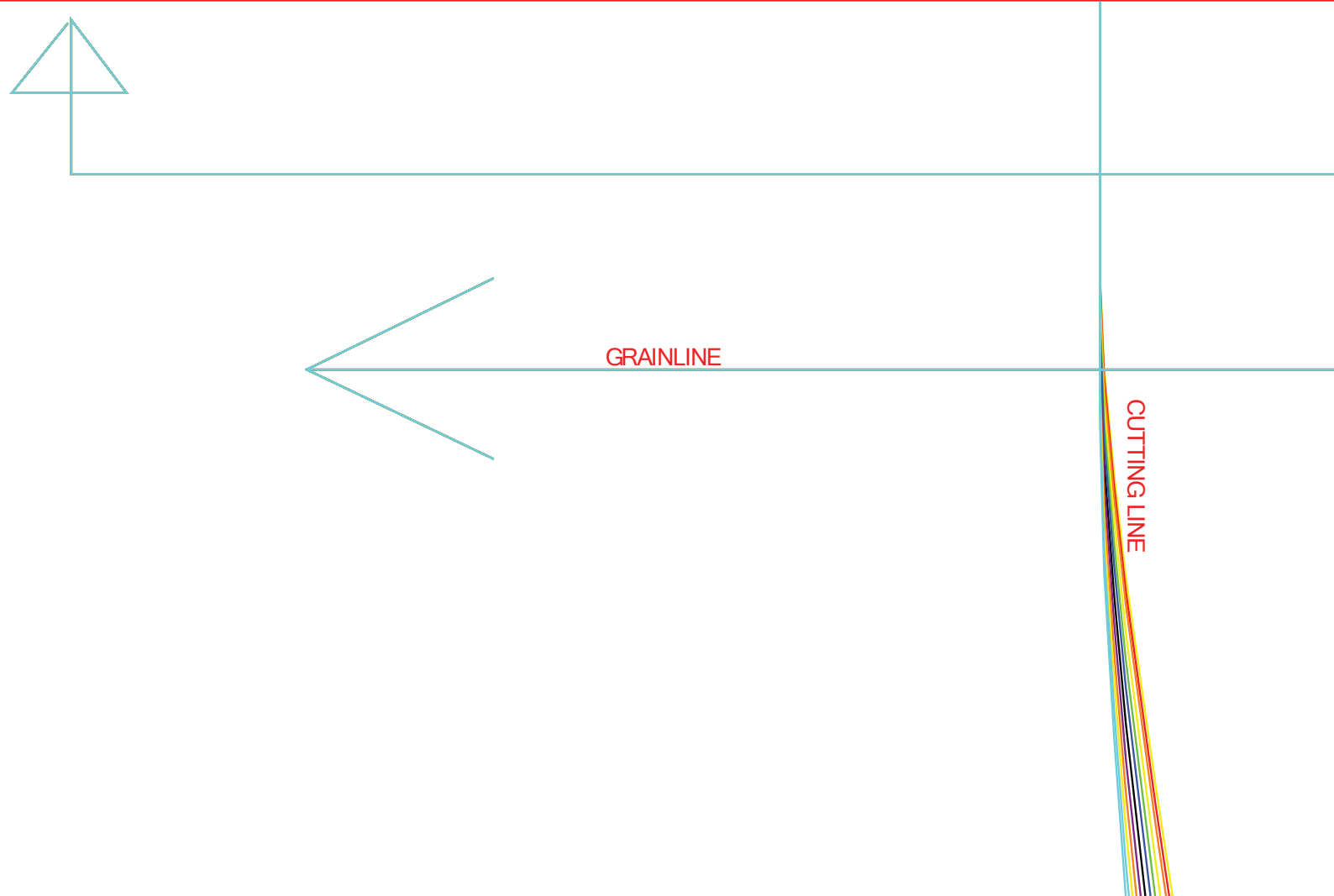
19-32 ->







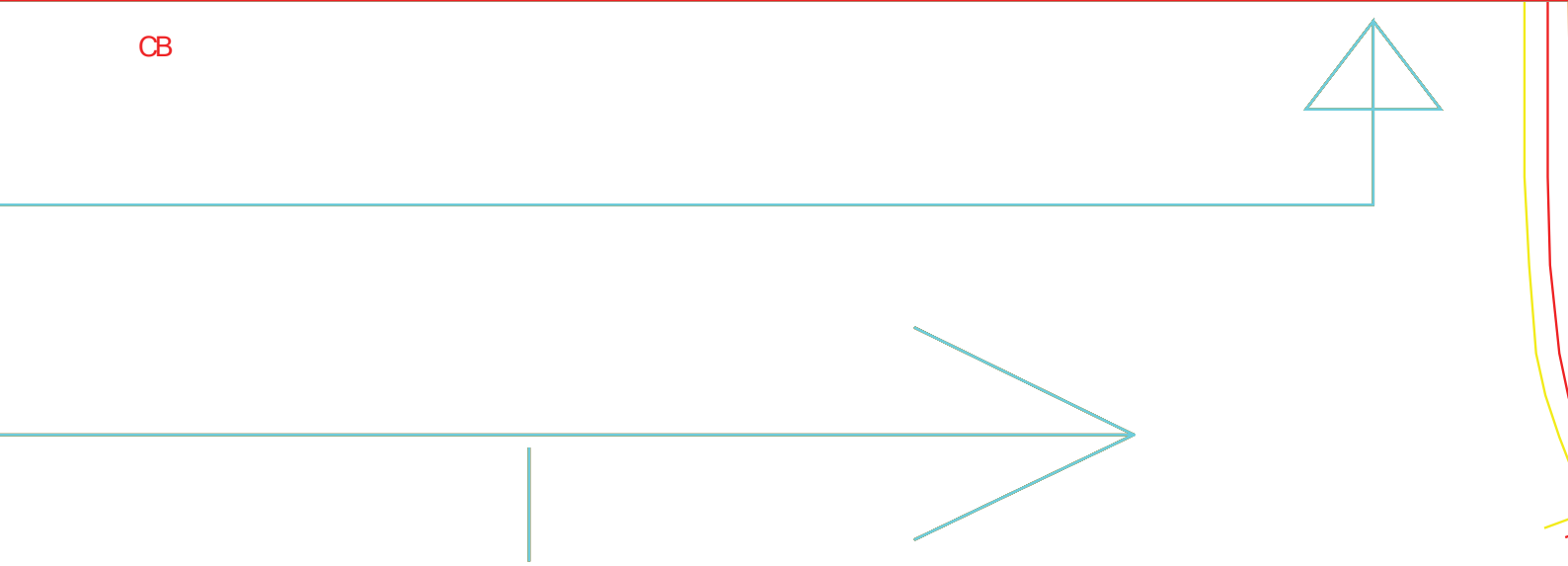
FOLD HERE

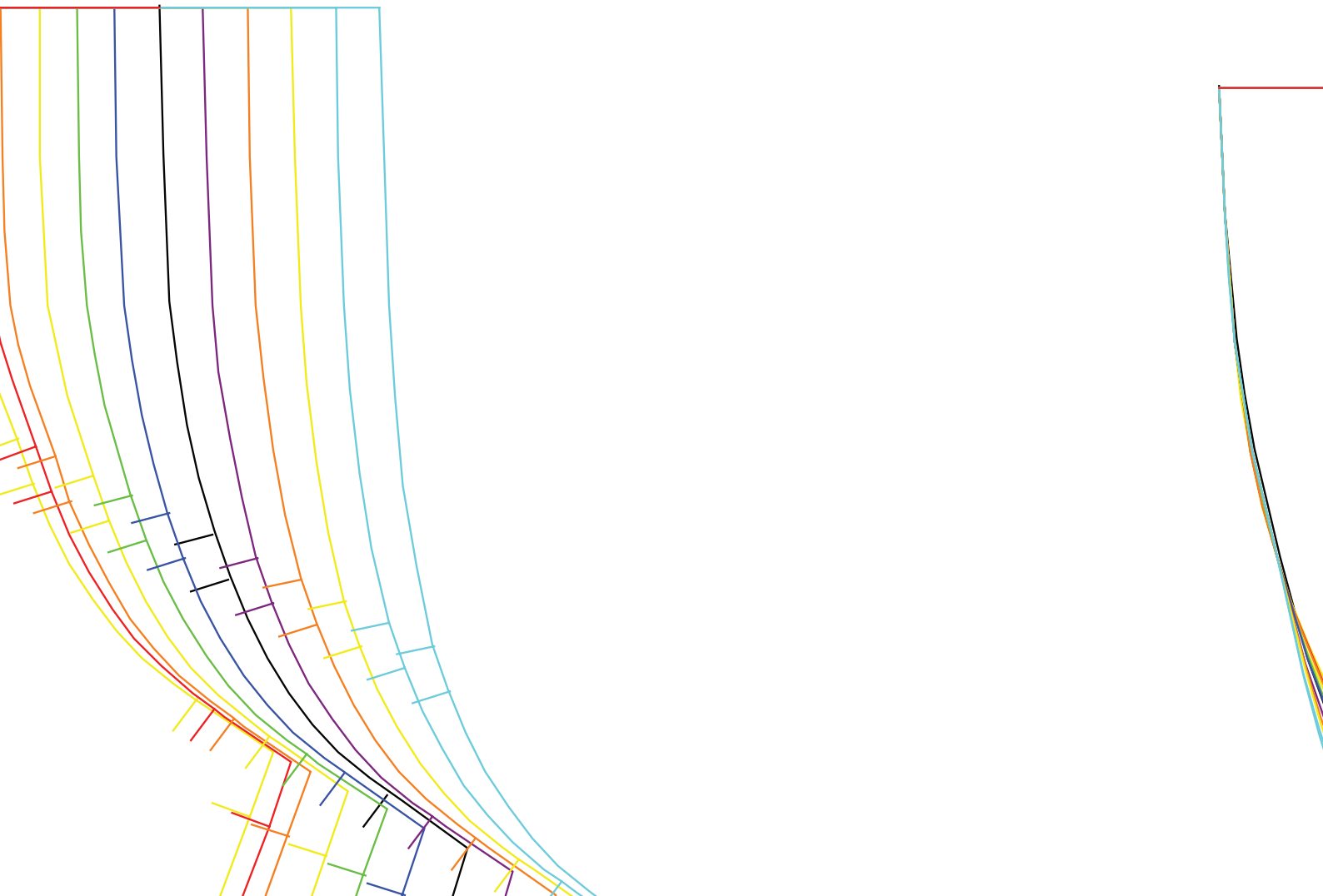


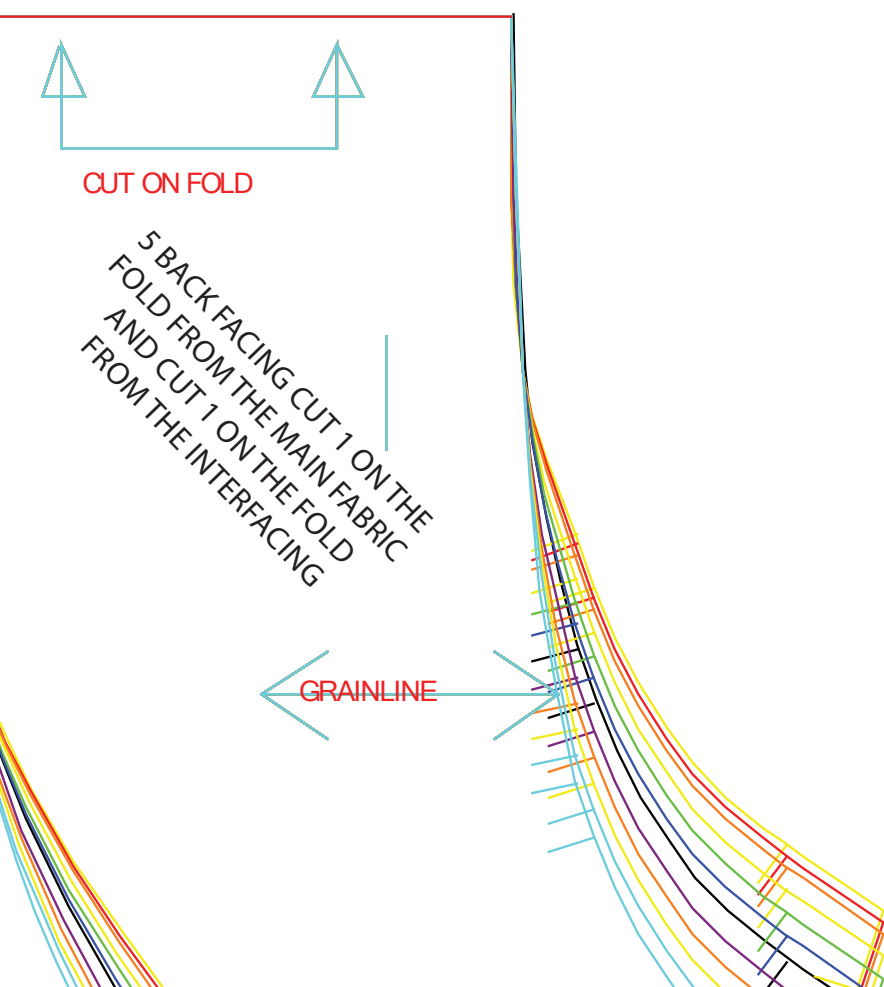
CUT ON FOLD

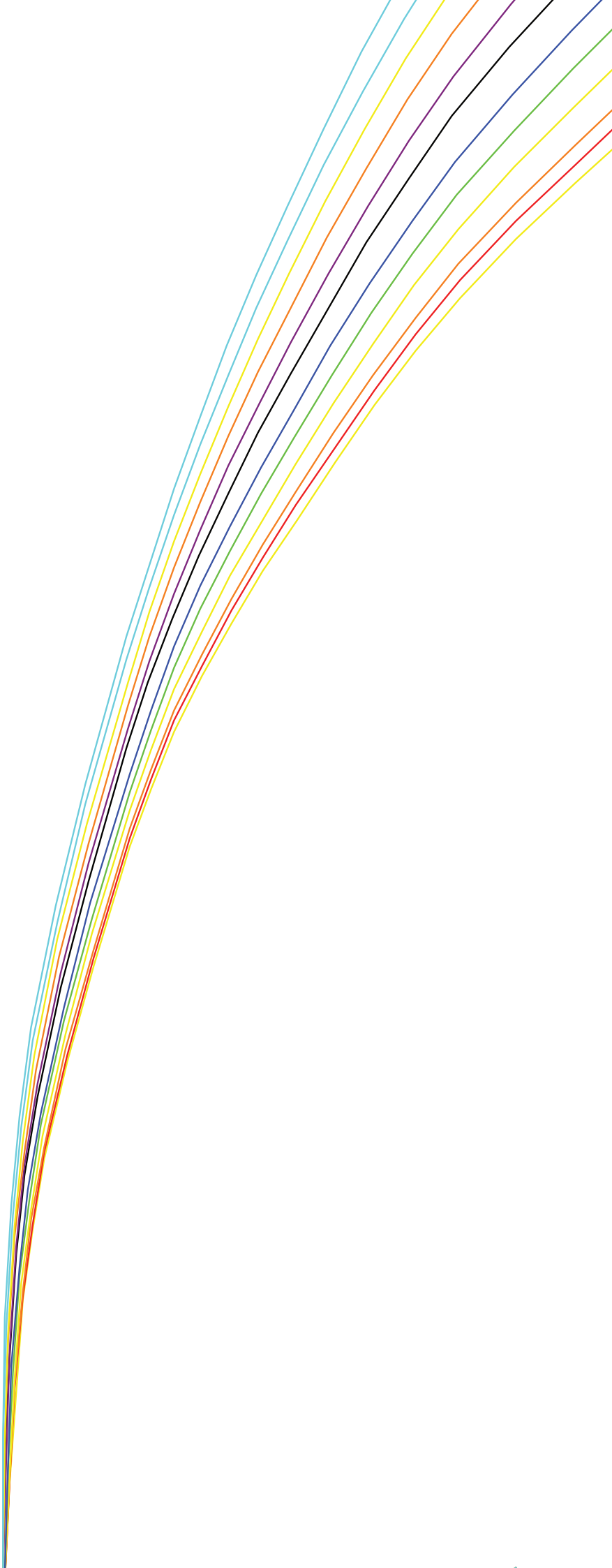
2 BACK BODICE CUT 1
ON THE FOLD FROM THE
MAIN FABRIC

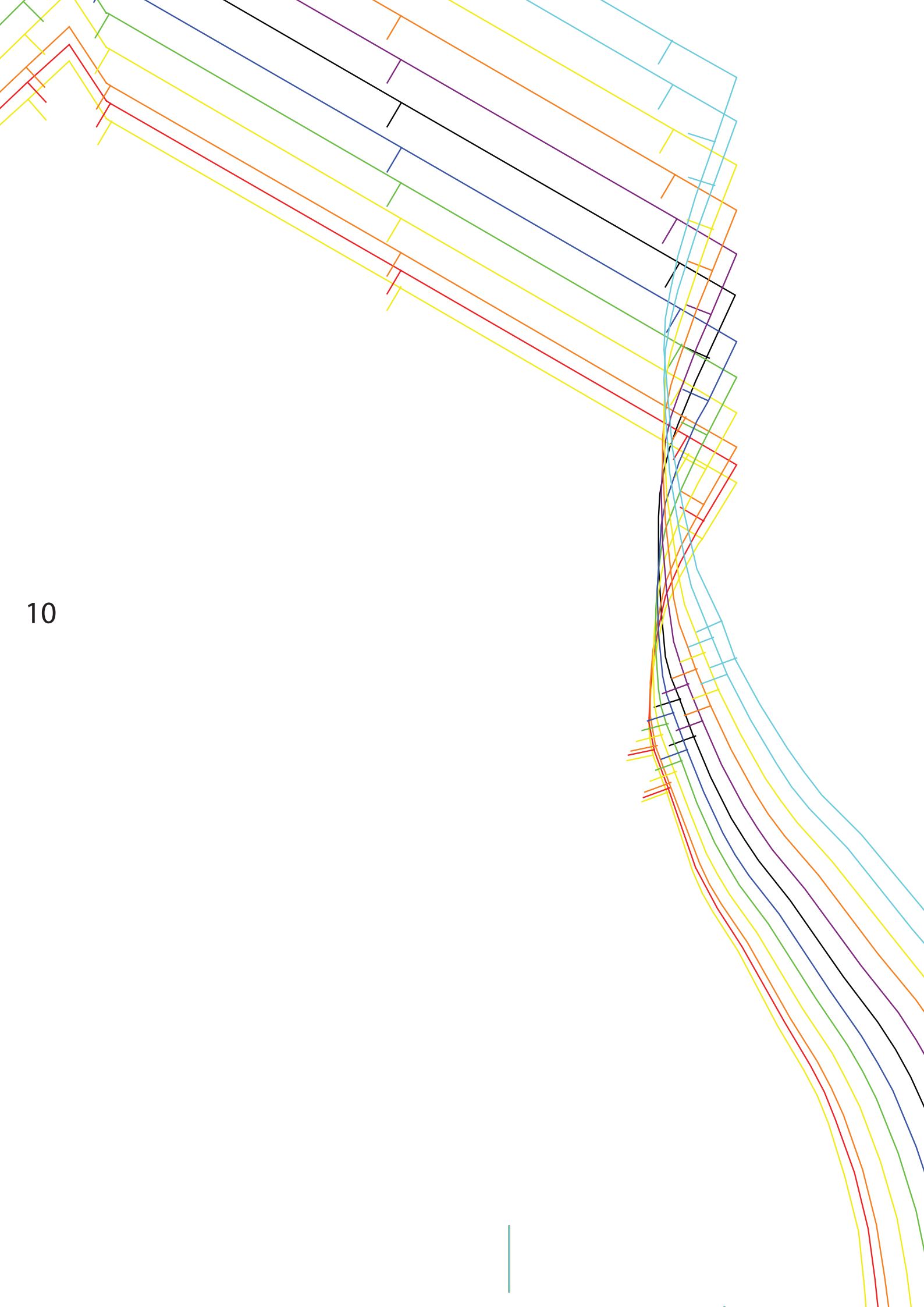
CB





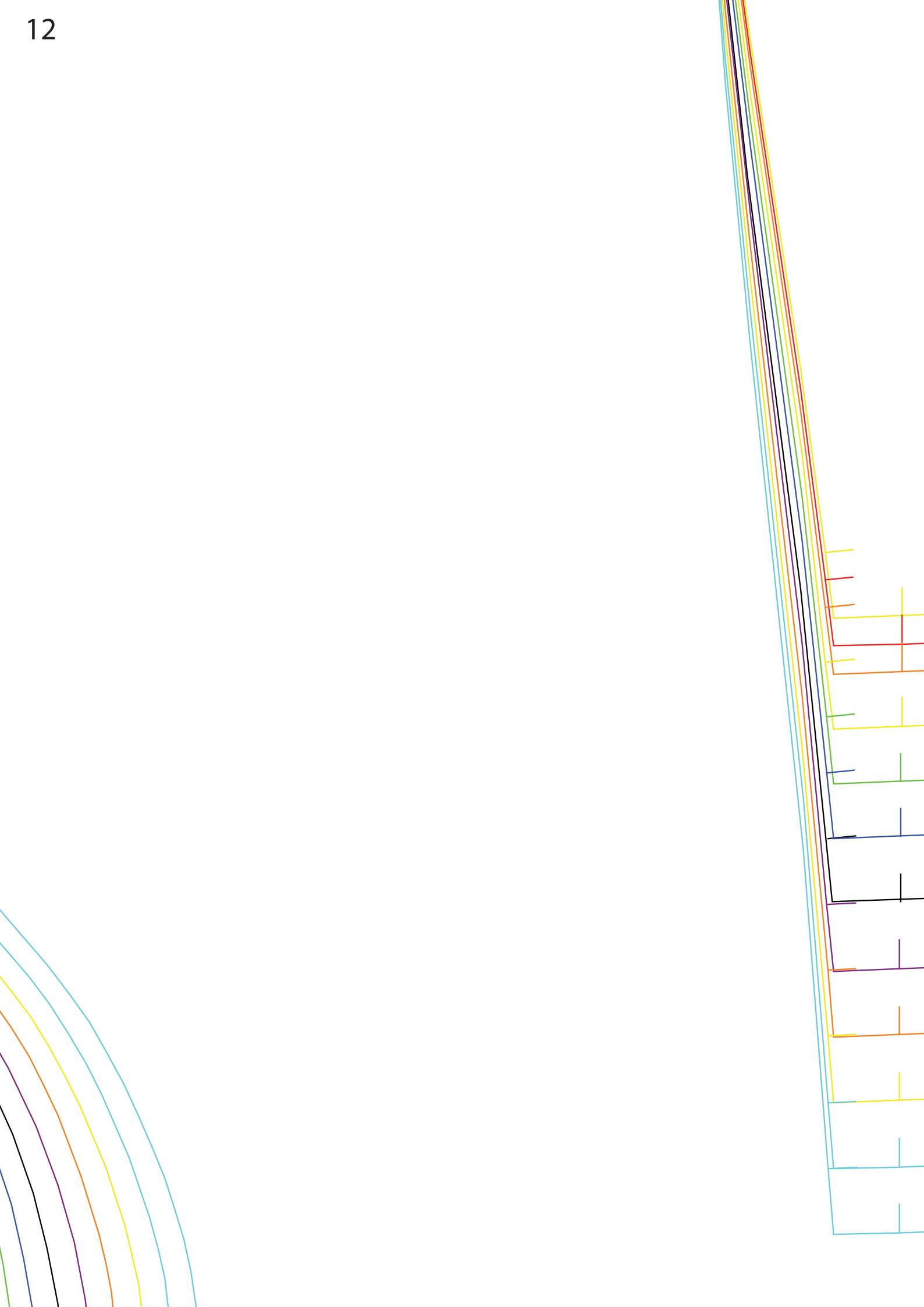






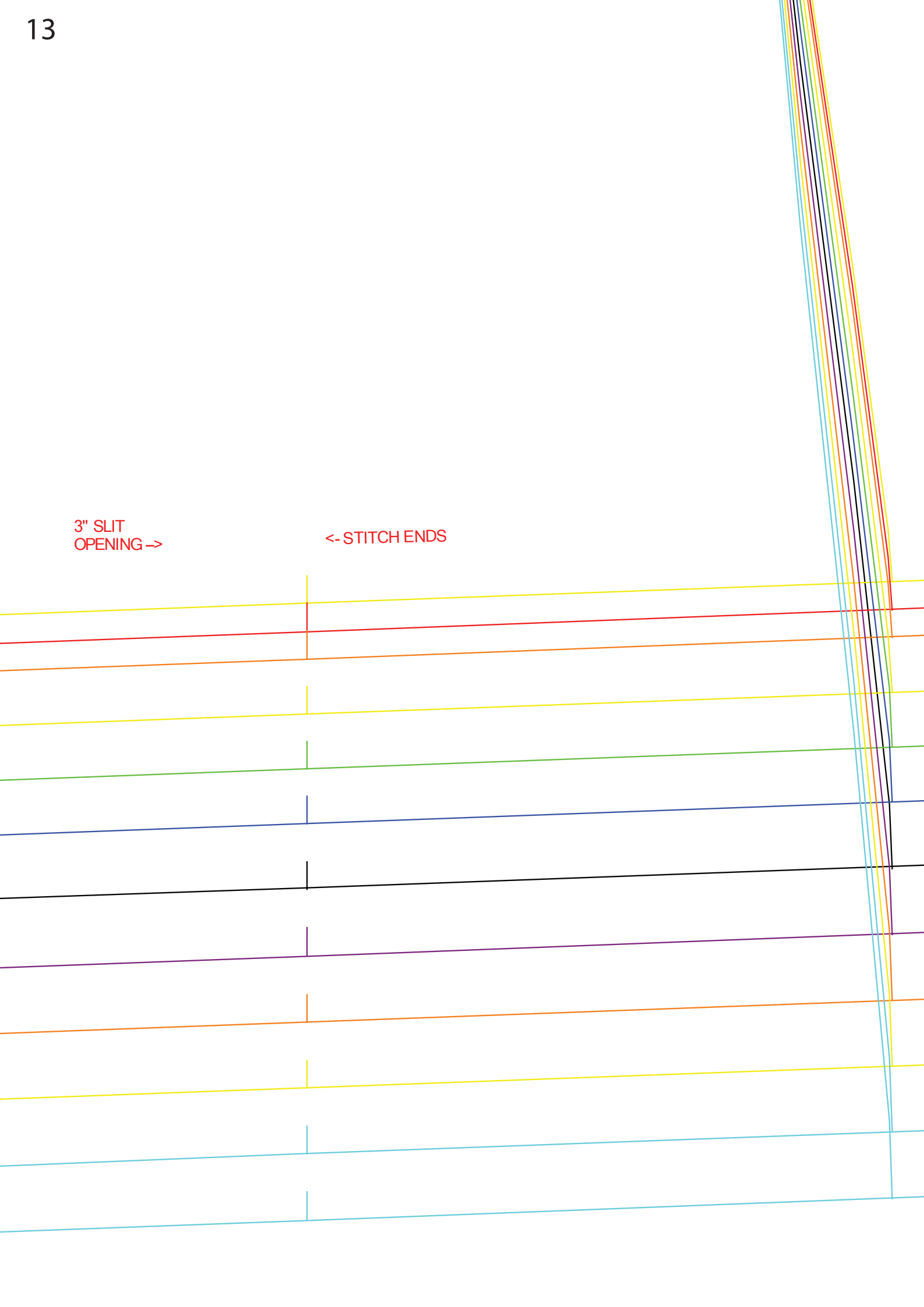
10

10

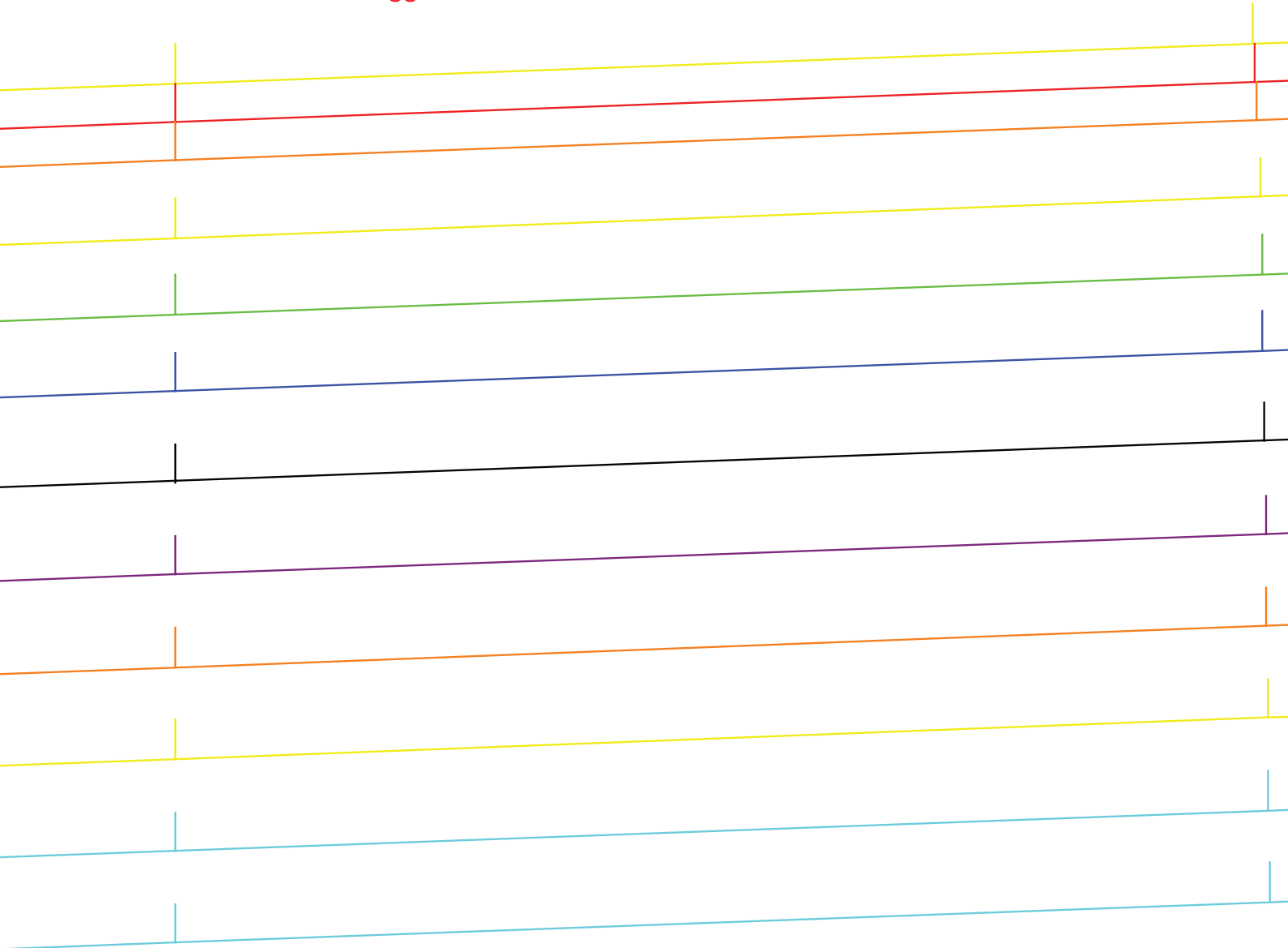


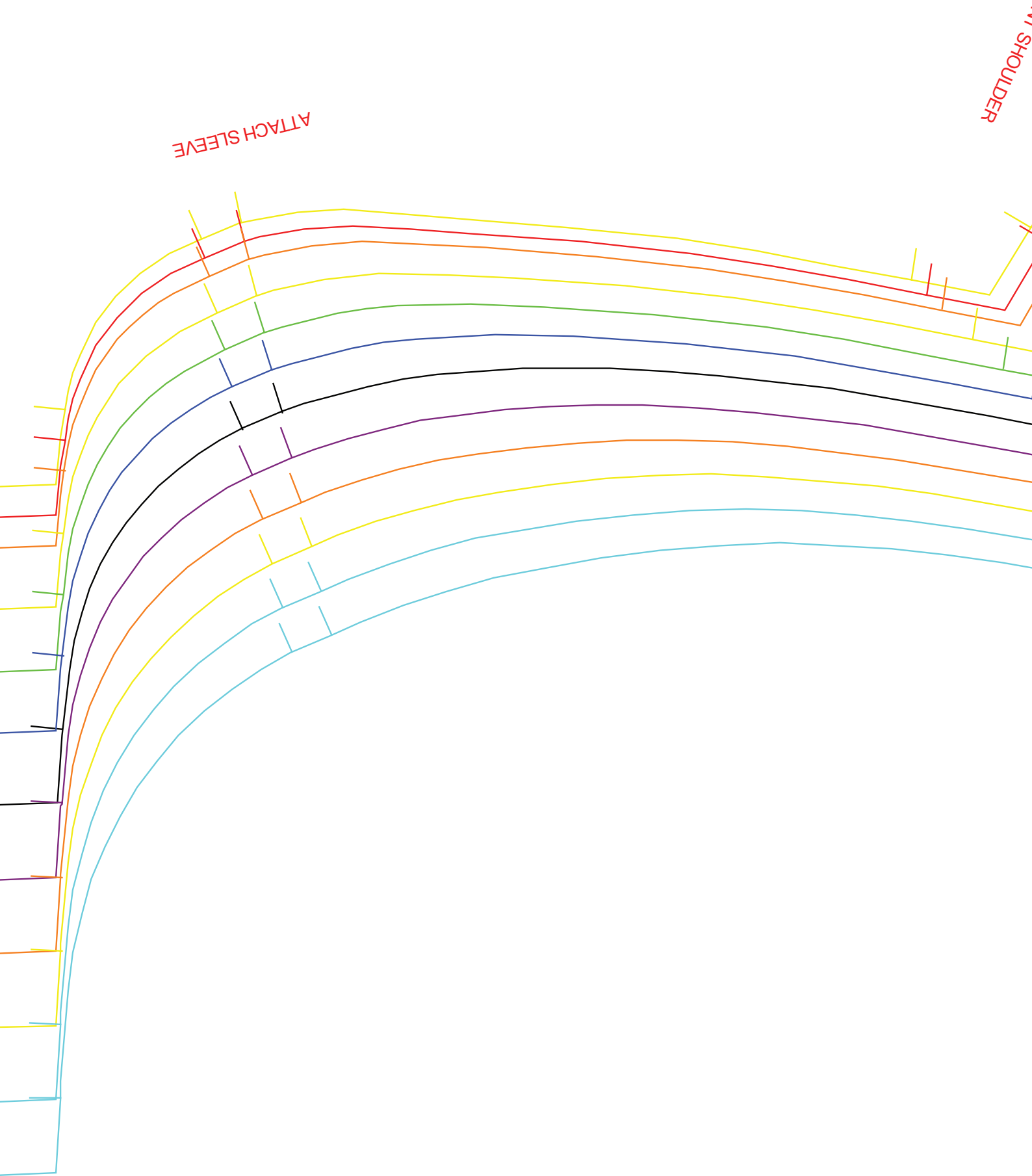
3" SLIT
OPENING →

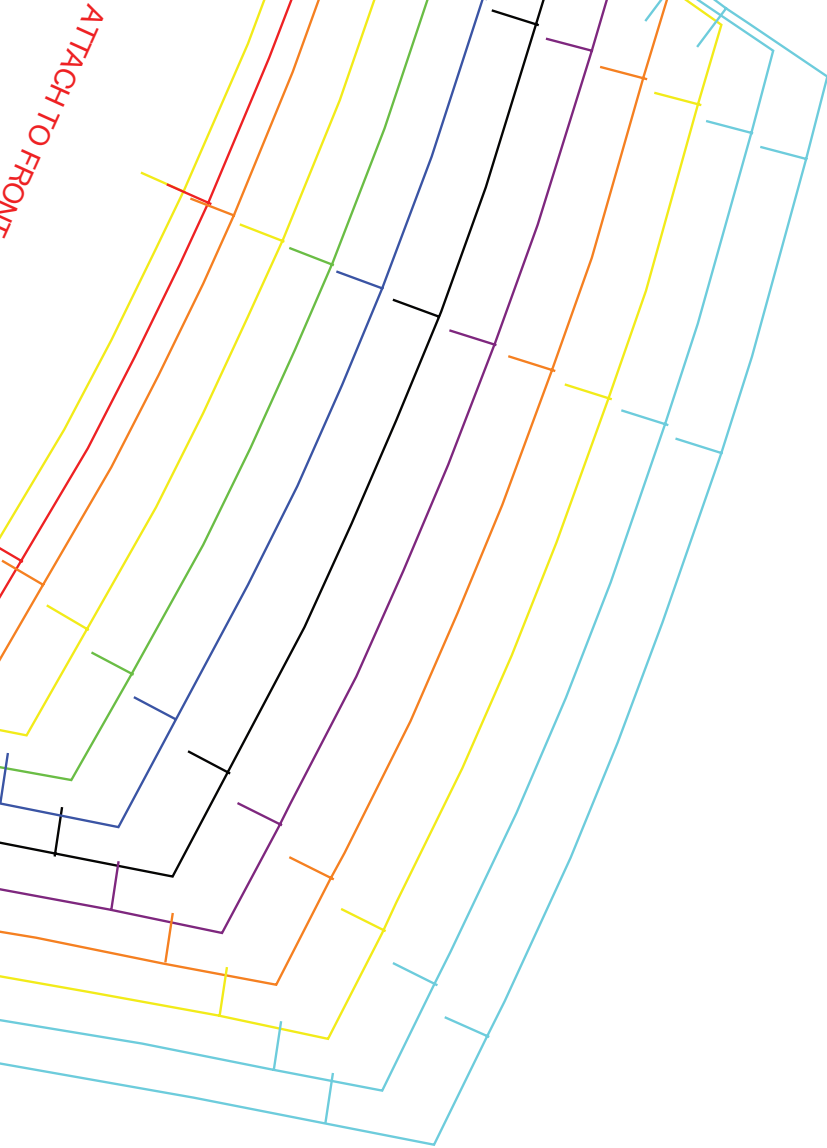
←- STITCH ENDS

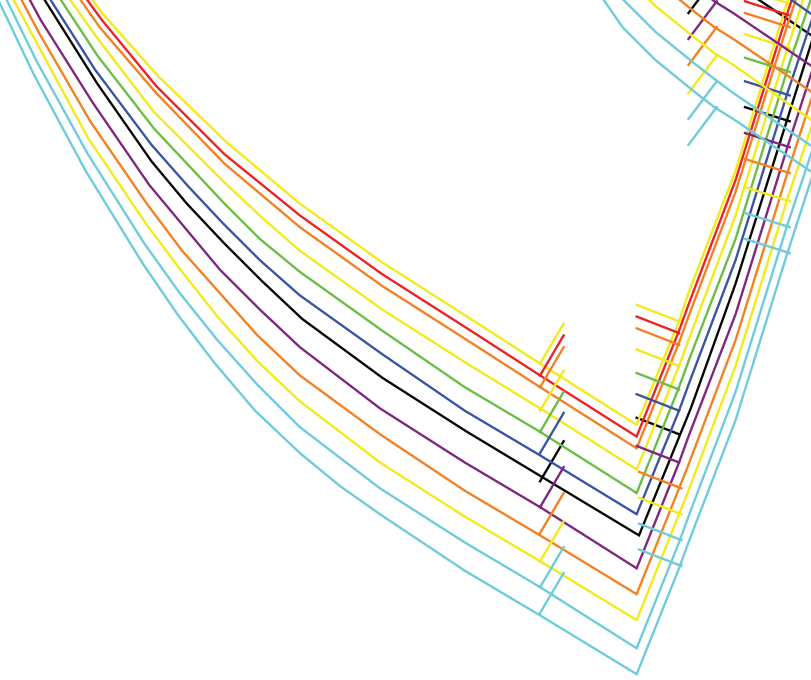


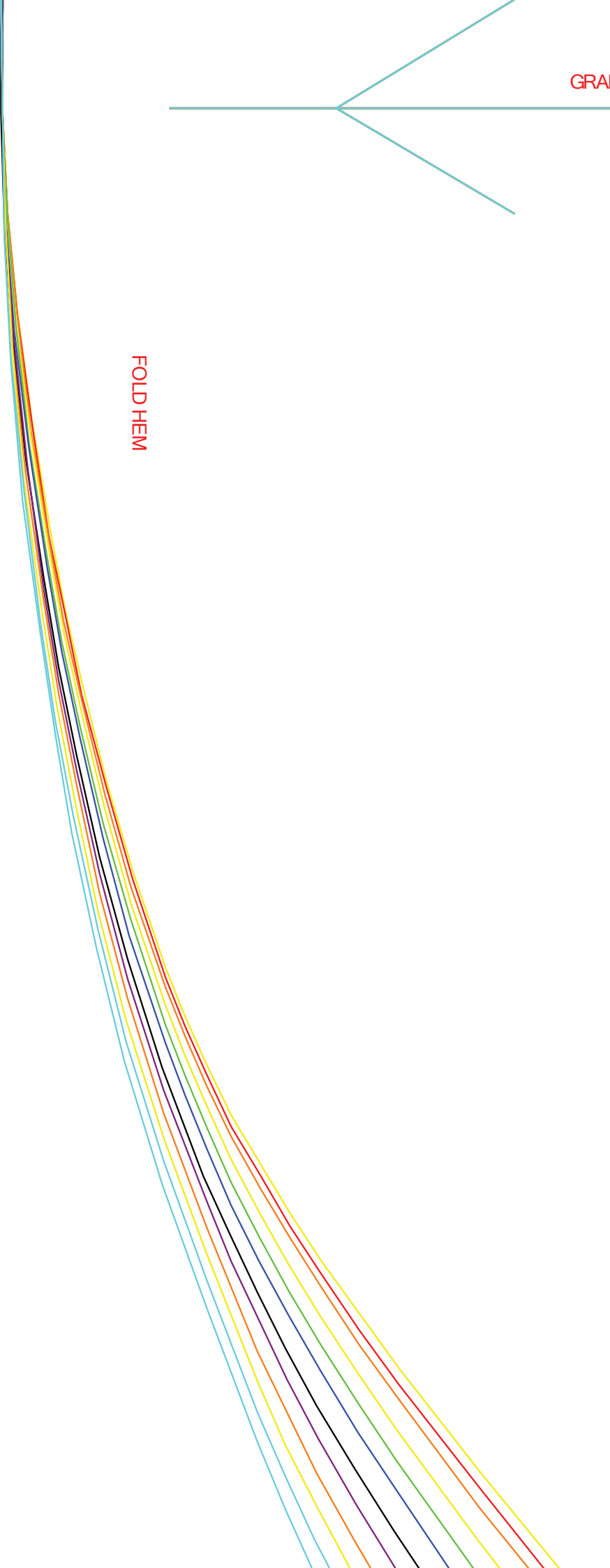
SS



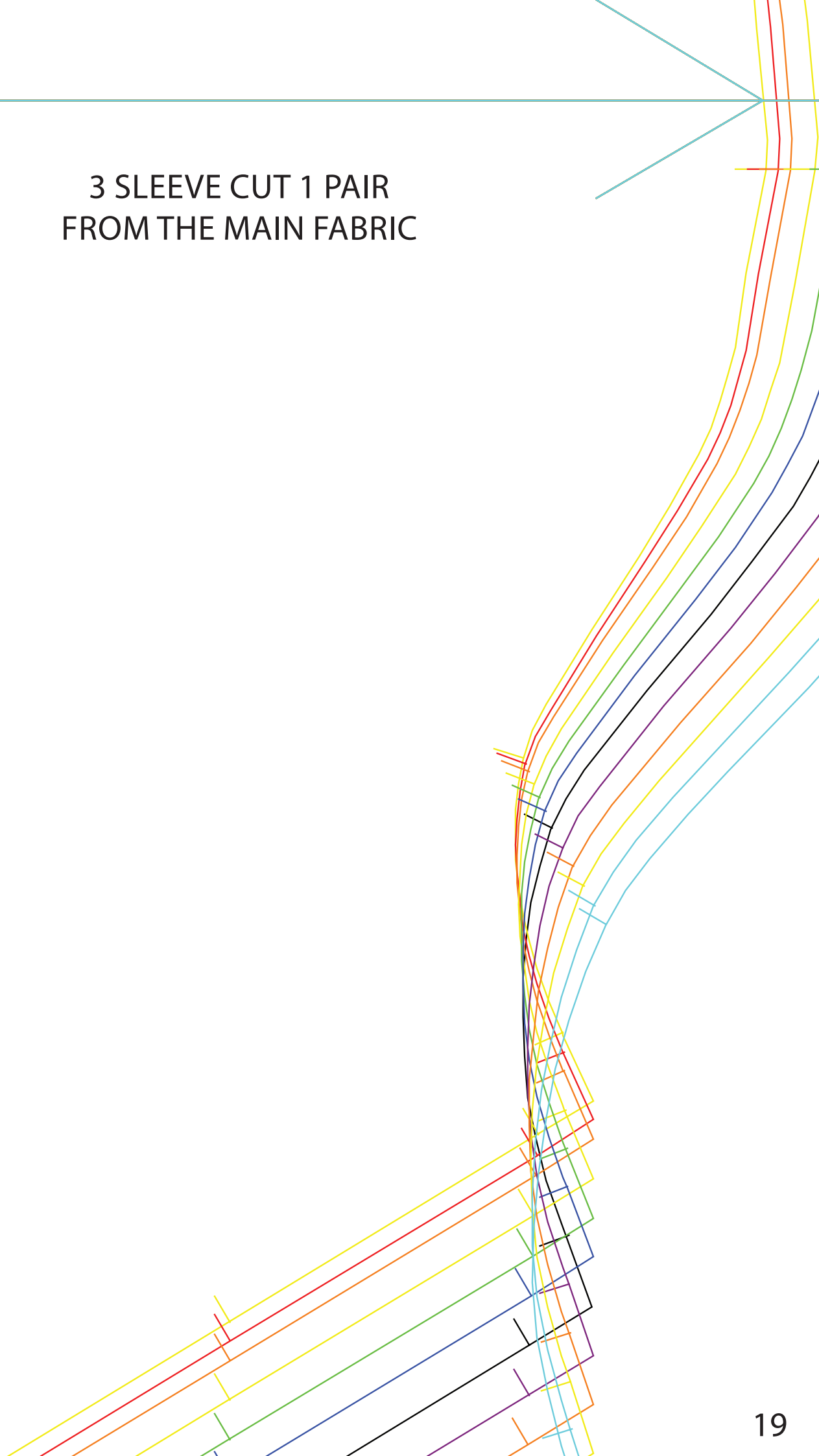


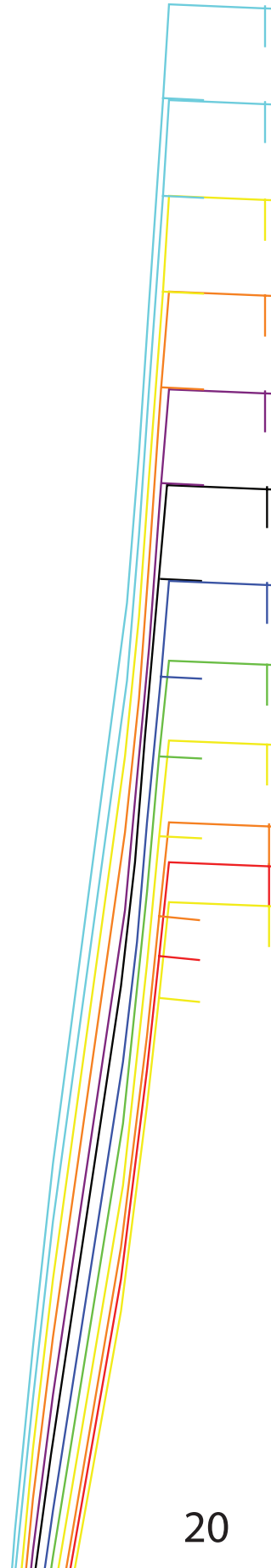
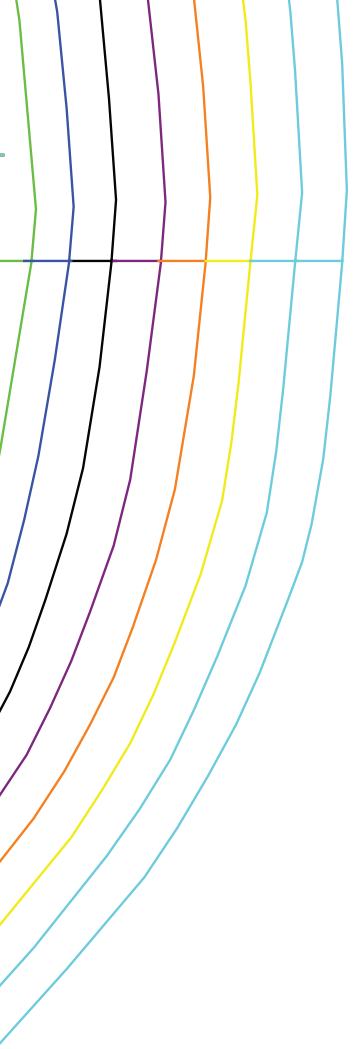


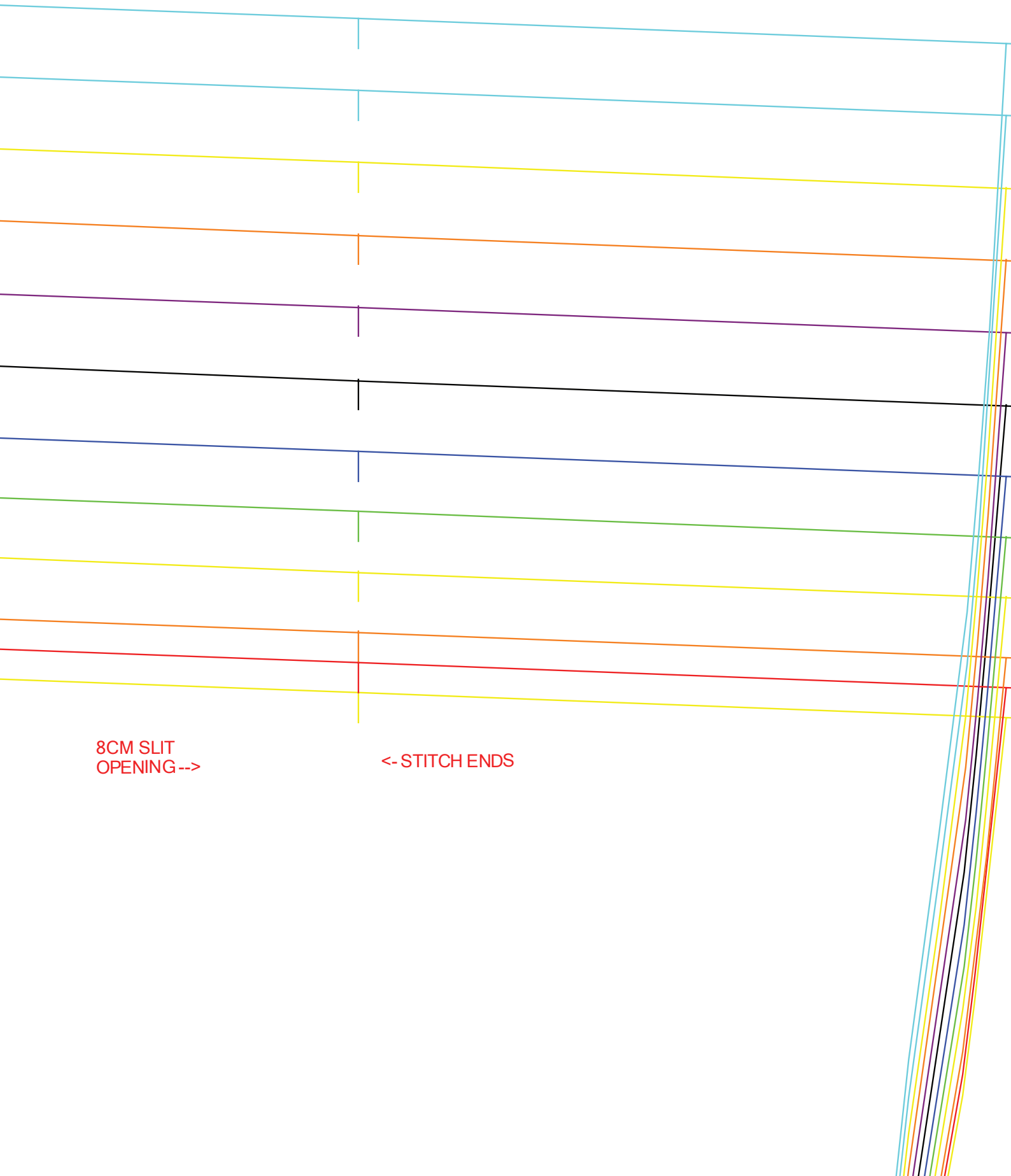


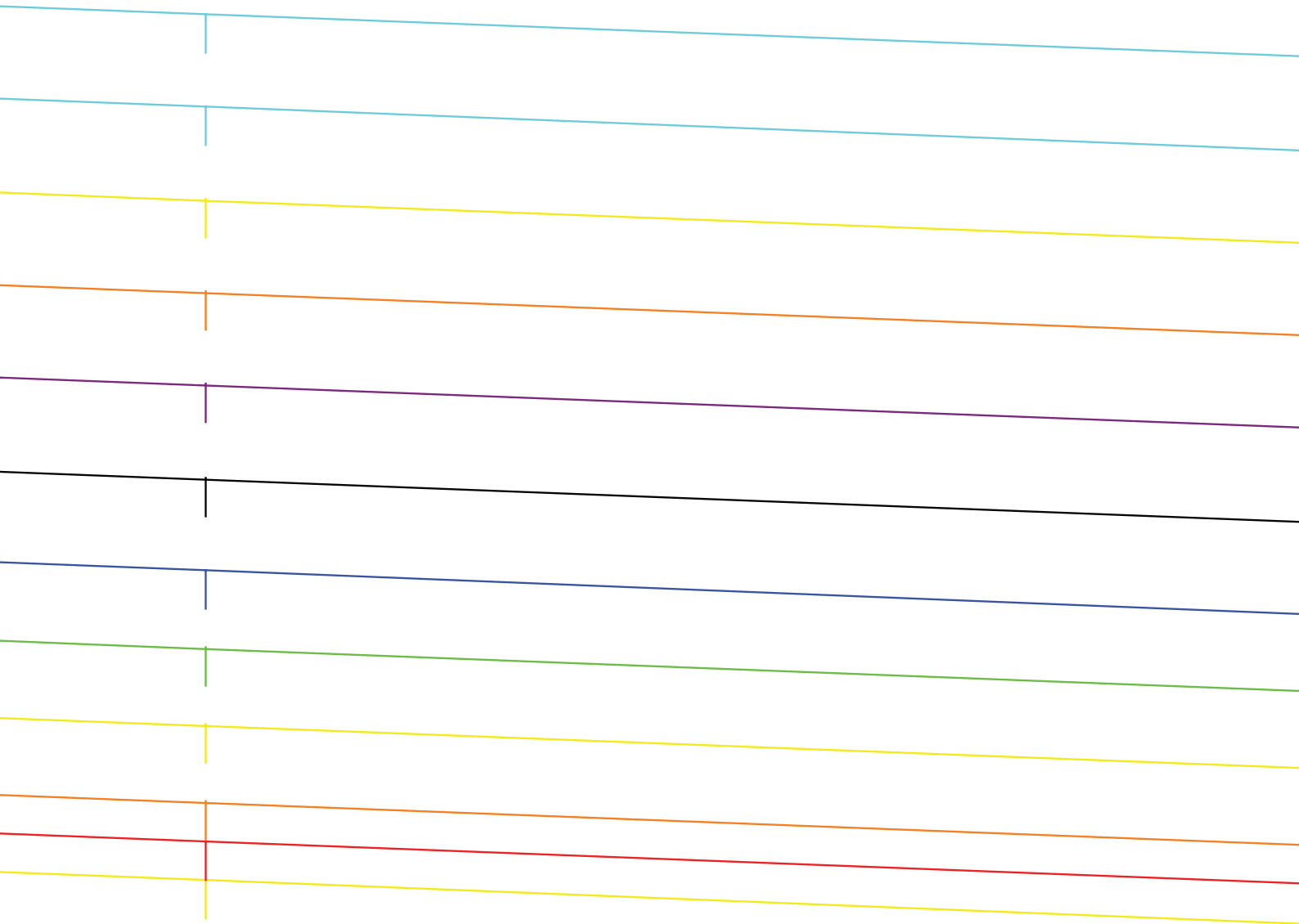


3 SLEEVE CUT 1 PAIR FROM THE MAIN FABRIC

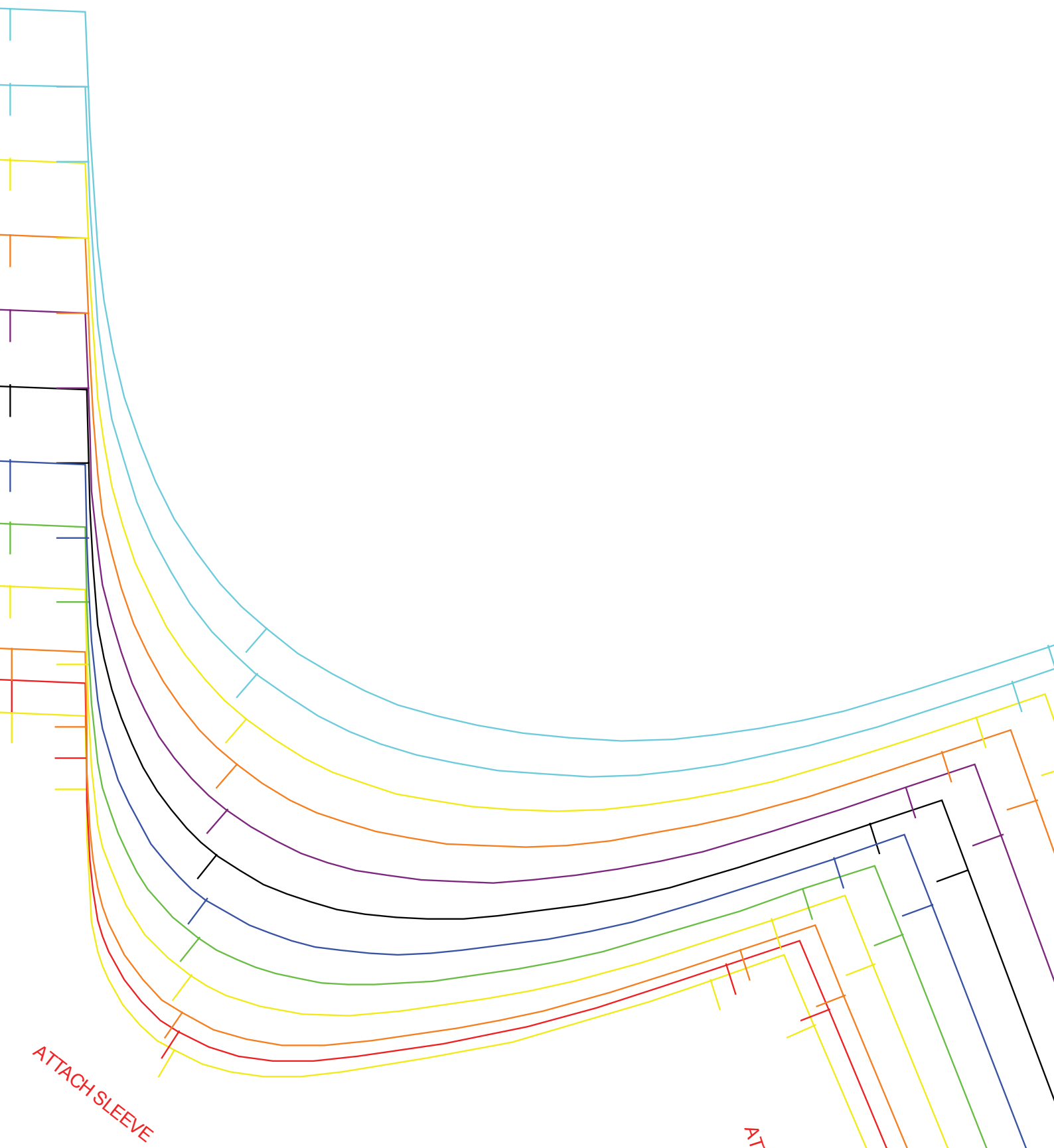


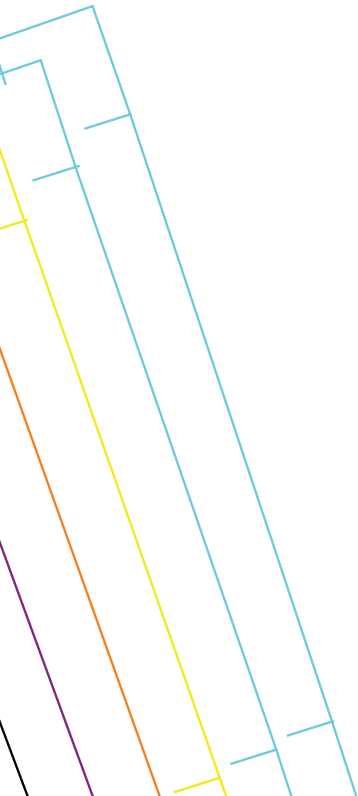


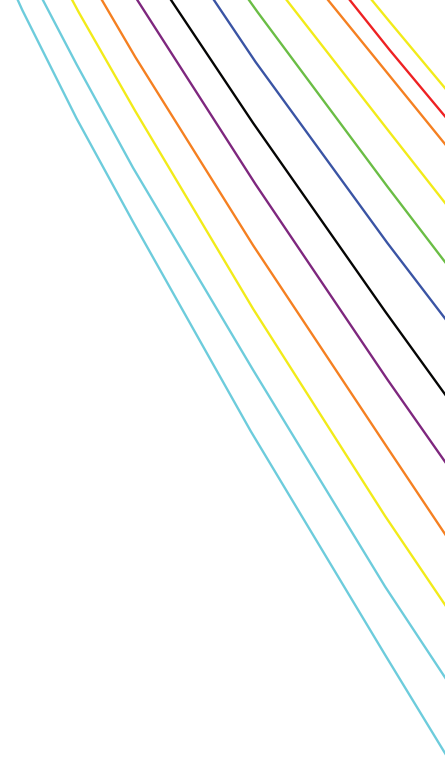


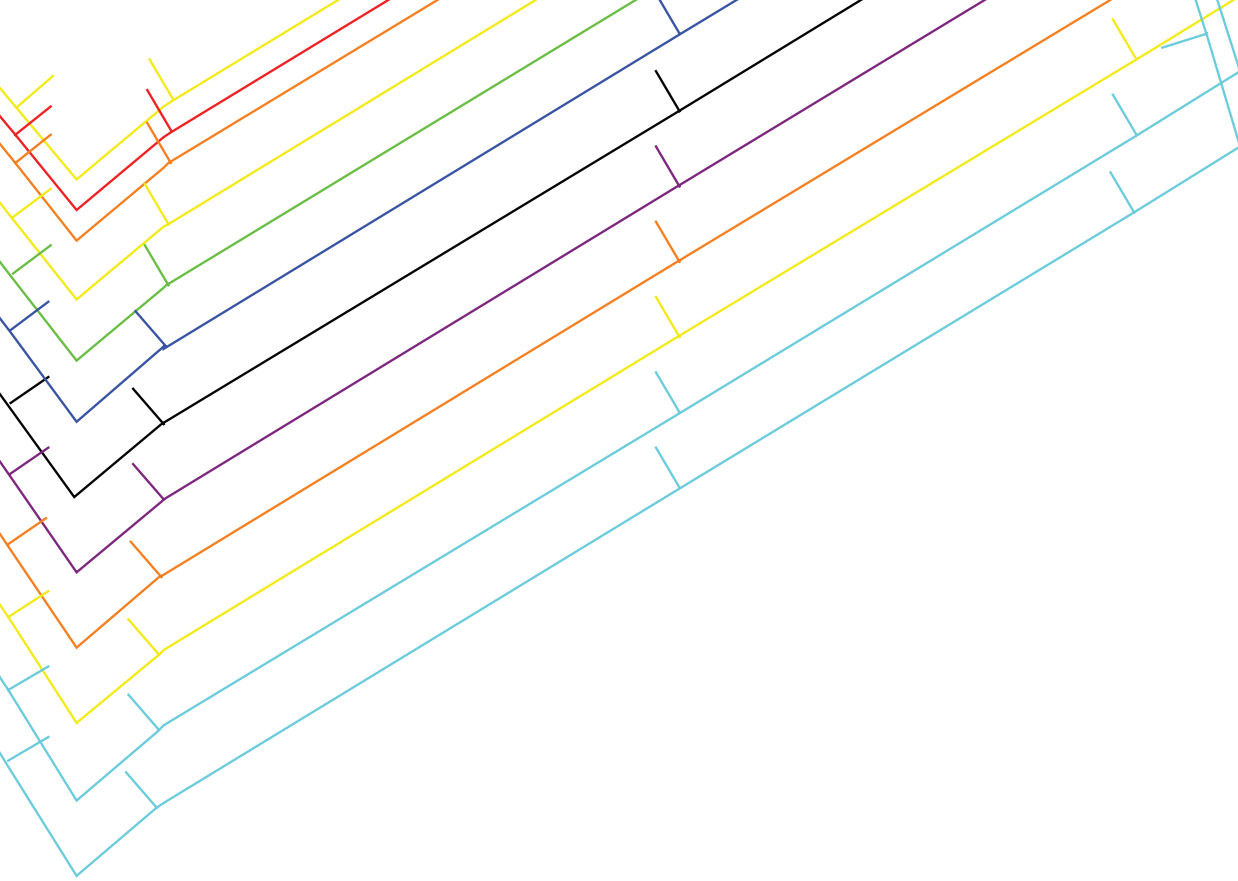


SS

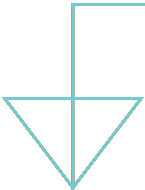


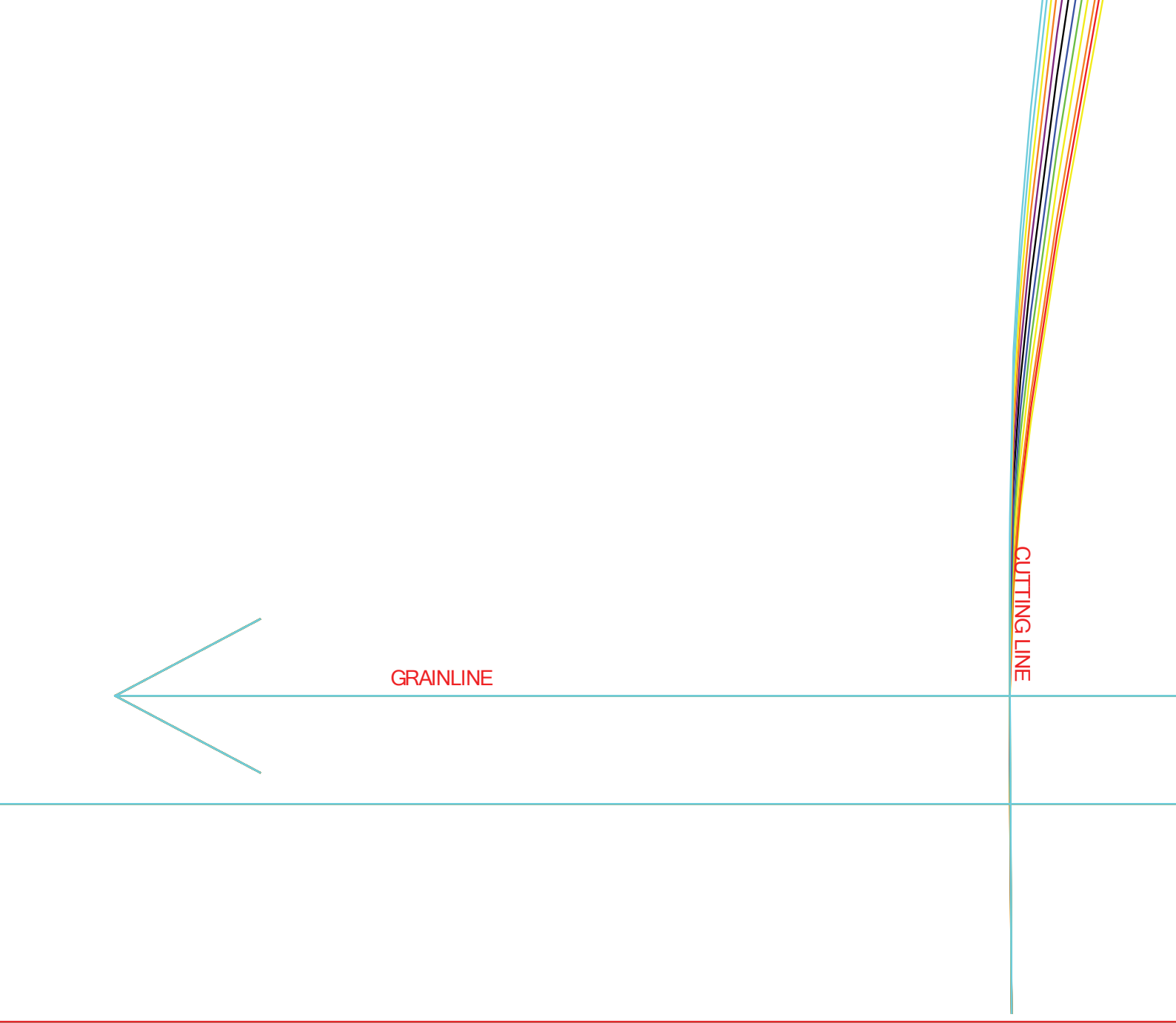






FOLD HEM





1 FRONT BODICE CUT 1 ON
THE FOLD FROM THE MAIN
FABRIC

CUT ON FOLD

CF

