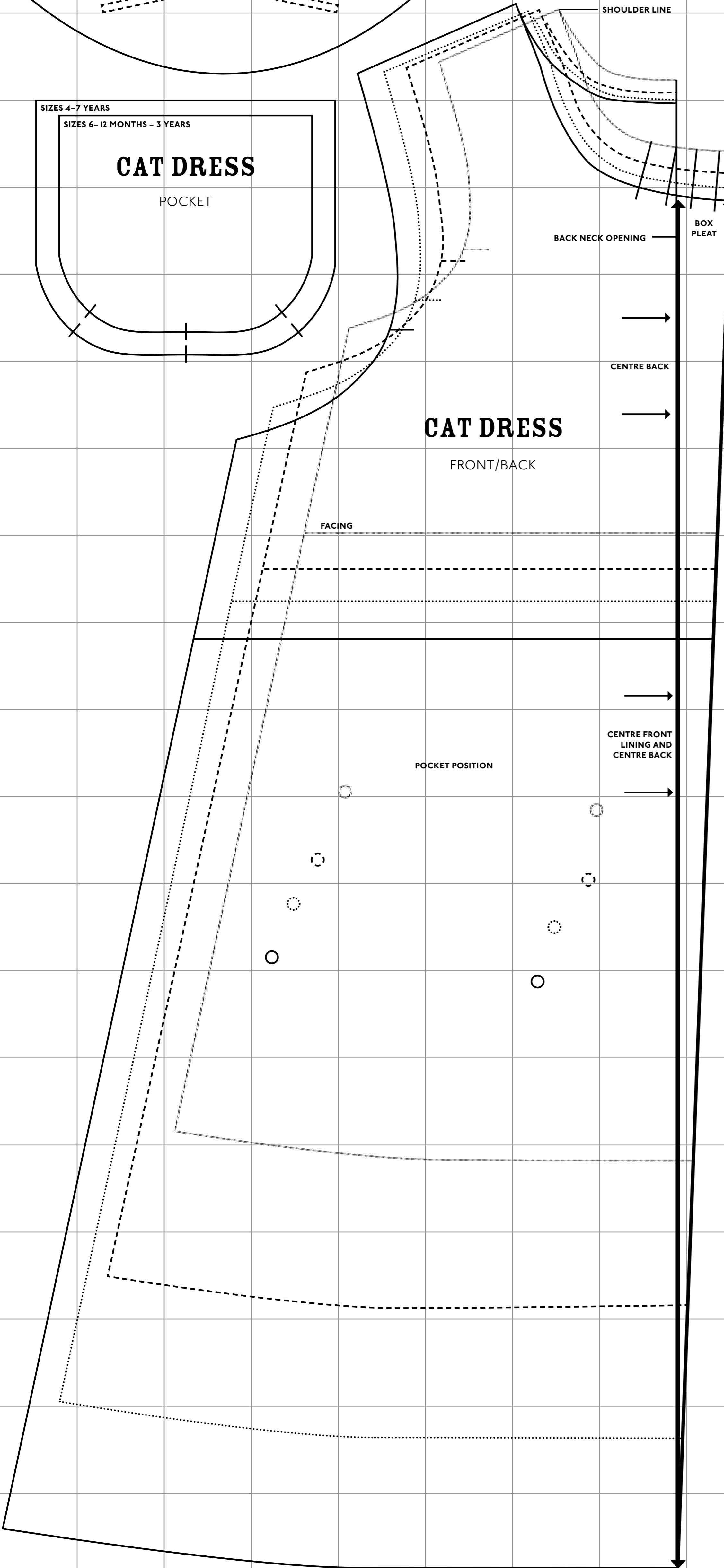
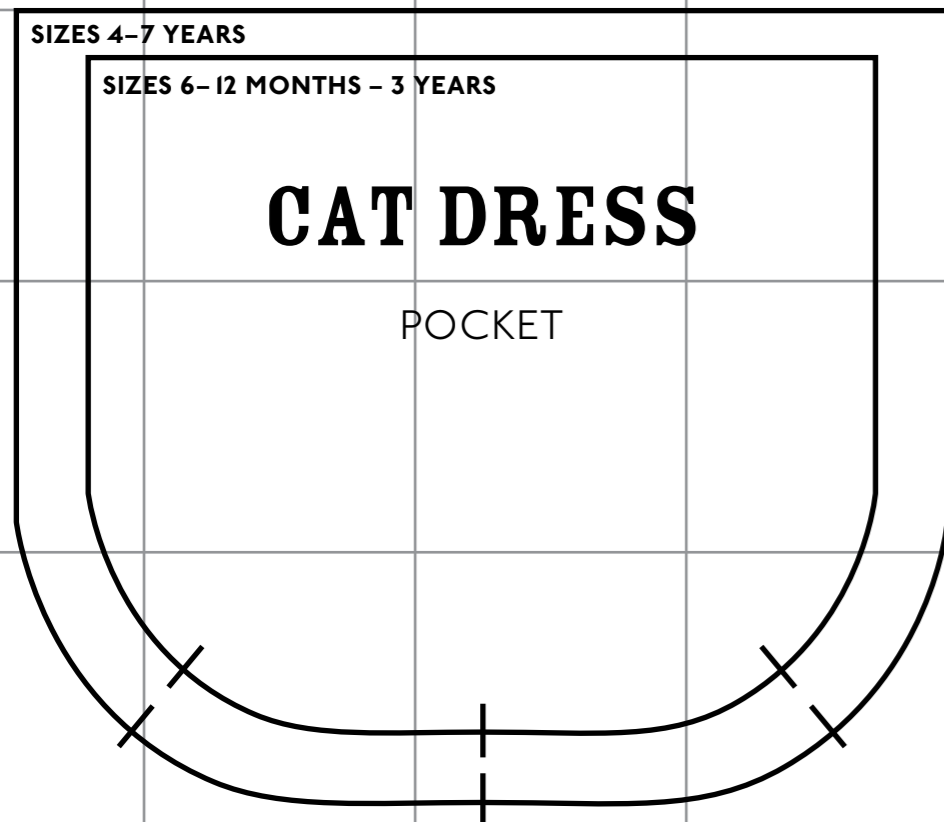
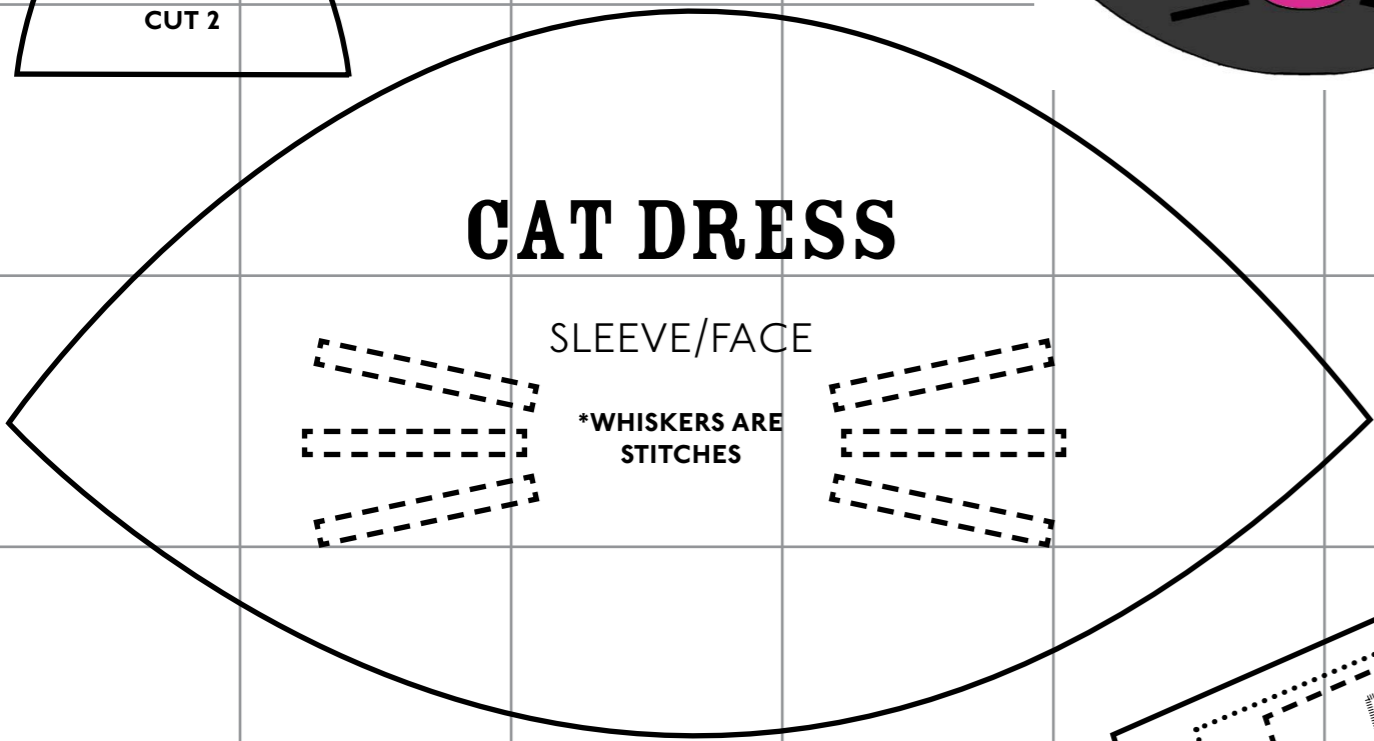
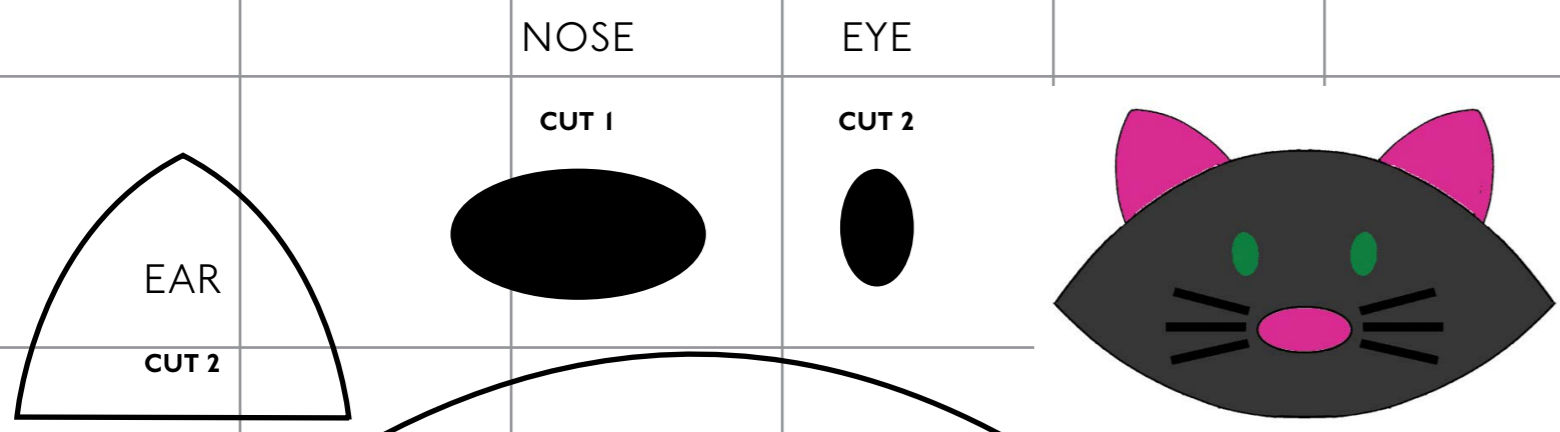


# CAT DRESS

## FINISHED MEASUREMENTS

SIZE	LENGTH FROM SNP*	CHEST	HEM CIRCUMFERENCE
6 months - 2 years	46cm (18in)	58cm (23in)	85cm (33 1/2in)
2 - 4 years	52cm (21in)	63cm (25in)	95cm (37 1/2in)
4 - 6 years	58cm (23in)	69cm (27 1/2in)	105cm (41 1/2in)
6 - 7 years	62cm (24 1/2in)	71cm (28 1/2in)	110cm (43 1/2in)

\*SNP - side neck point (measured from point on garment closest to neck)



# MOUSE DRESS

## FINISHED MEASUREMENTS

SIZE	LENGTH FROM SNP*	CHEST	HEM CIRCUMFERENCE
6 months - 2 years	46cm (18in)	58cm (23in)	85cm (33 1/2in)
2 - 4 years	52cm (21in)	63cm (25in)	95cm (37 1/2in)
4 - 6 years	58cm (23in)	69cm (27 1/2in)	105cm (41 1/2in)
6 - 7 years	62cm (24 1/2in)	71cm (28 1/2in)	110cm (43 1/2in)

\*SNP - side neck point (measured from point on garment closest to neck)

